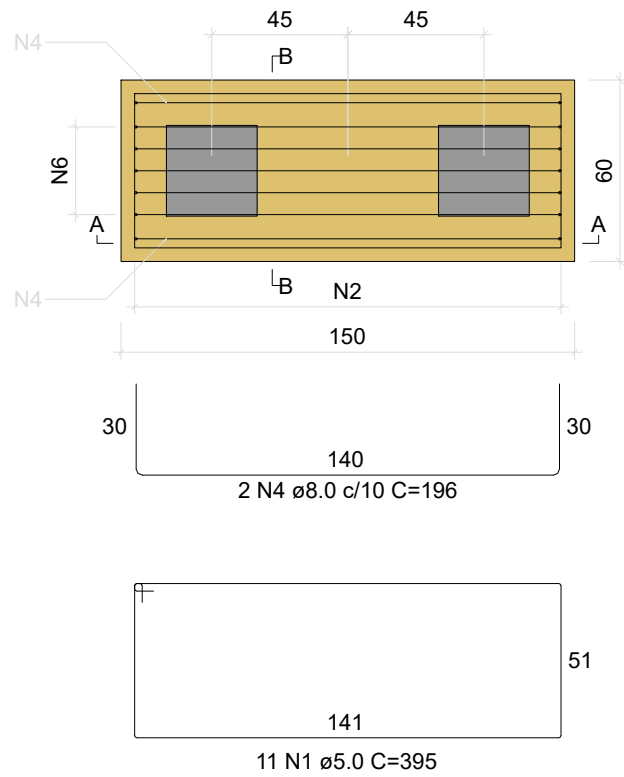
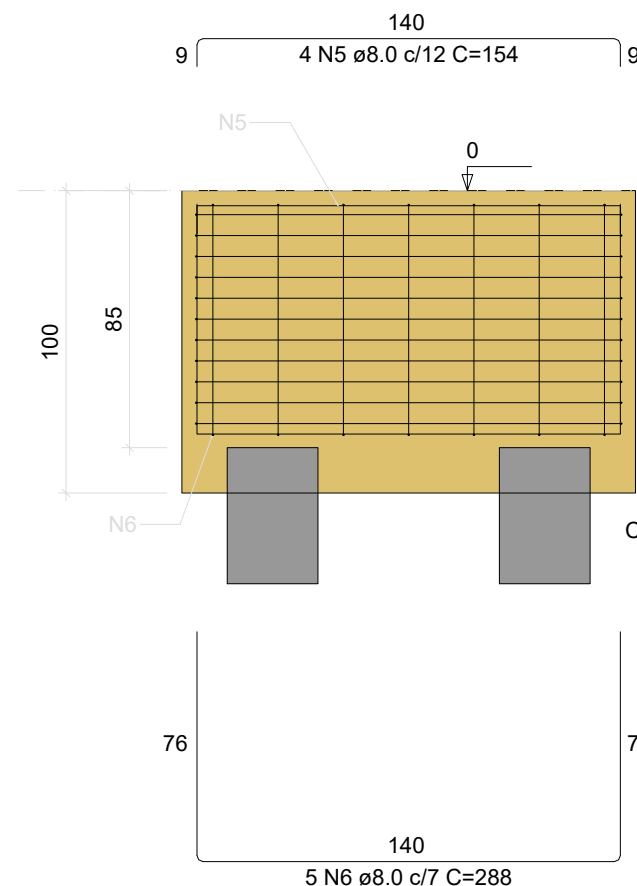


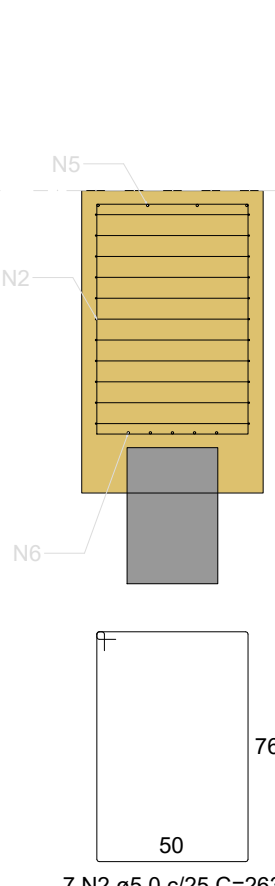
BI-P39  
2xR30  
PLANTA  
ESC 1:25



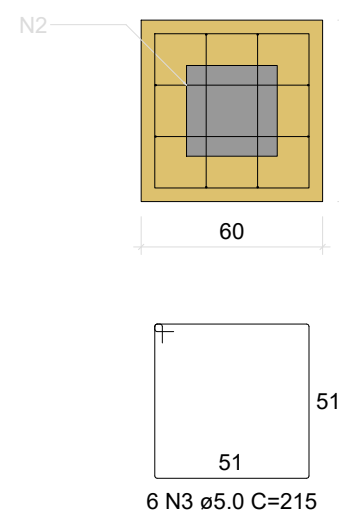
CORTE A-A  
ESC 1:25



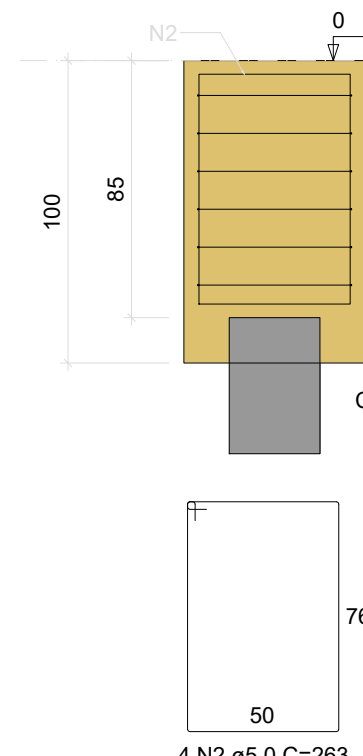
CORTE B-B  
ESC 1:25



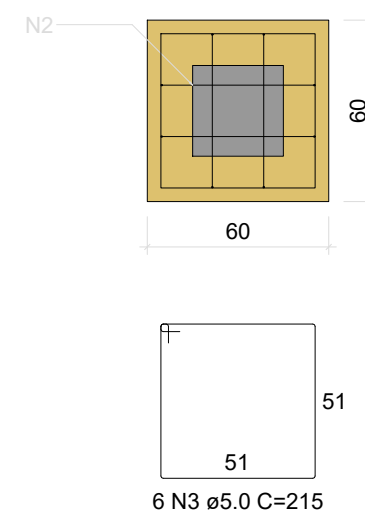
BI-P40  
1xR30  
PLANTA  
ESC 1:25



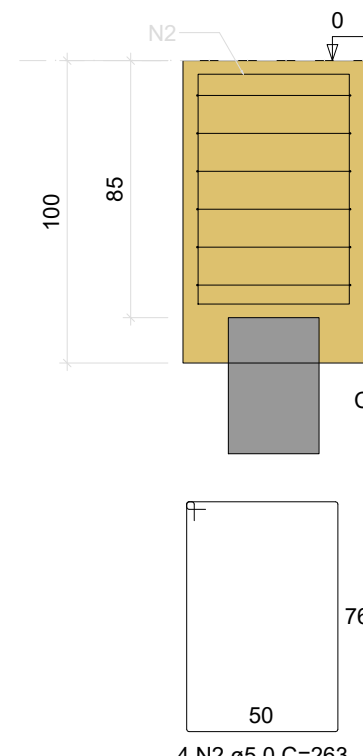
CORTE  
ESC 1:25



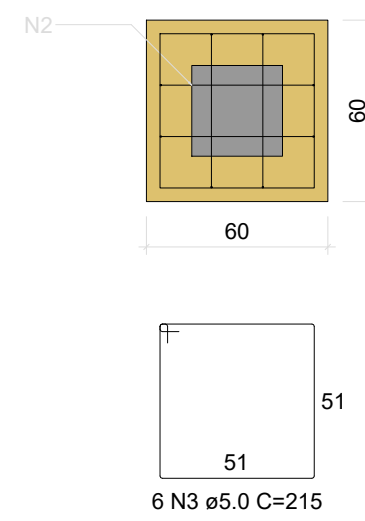
BI-P41  
1xR30  
PLANTA  
ESC 1:25



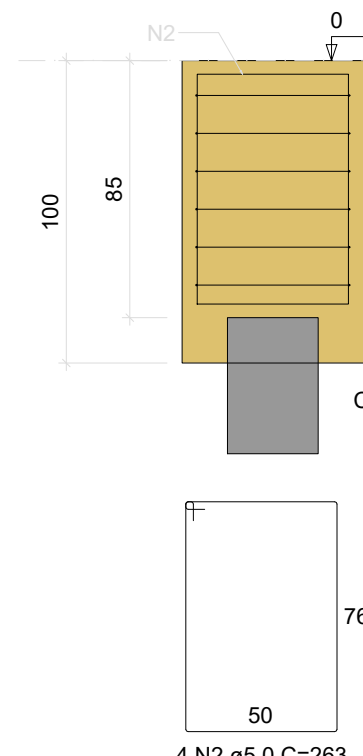
CORTE  
ESC 1:25



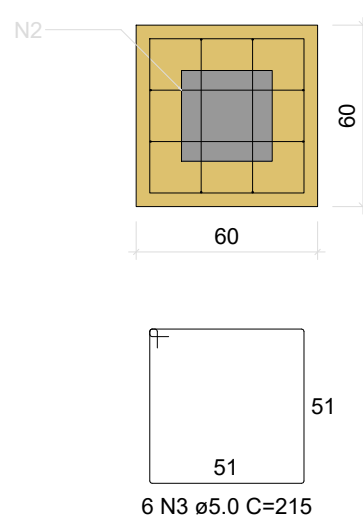
BI-P42  
1xR30  
PLANTA  
ESC 1:25



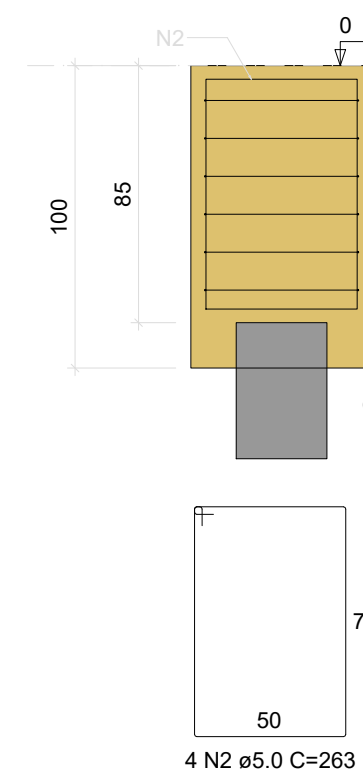
CORTE  
ESC 1:25



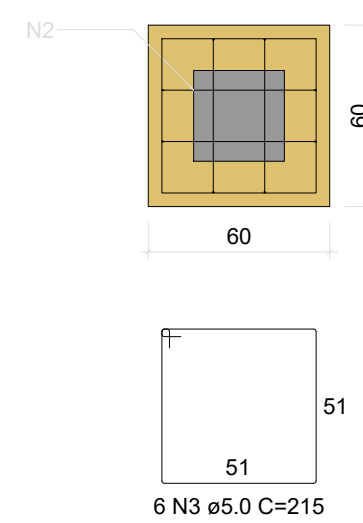
BI-P43  
1xR30  
PLANTA  
ESC 1:25



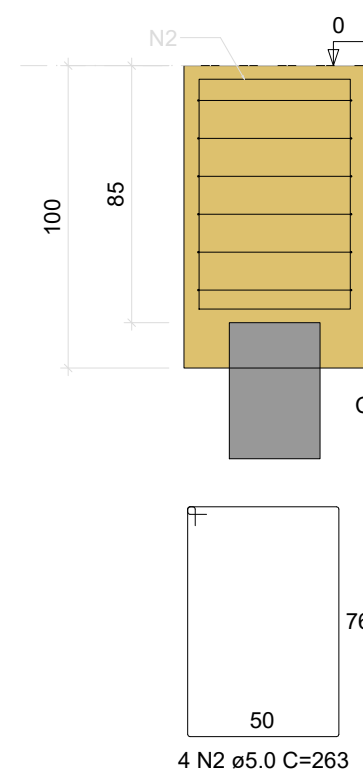
CORTE  
ESC 1:25



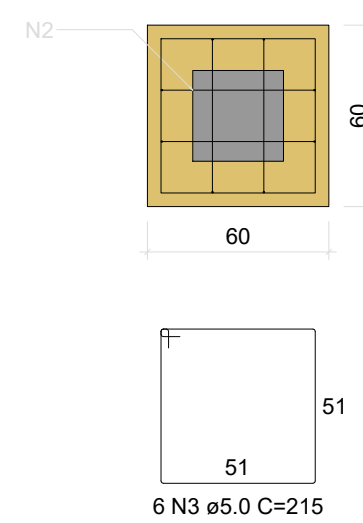
BI-P44  
1xR30  
PLANTA  
ESC 1:25



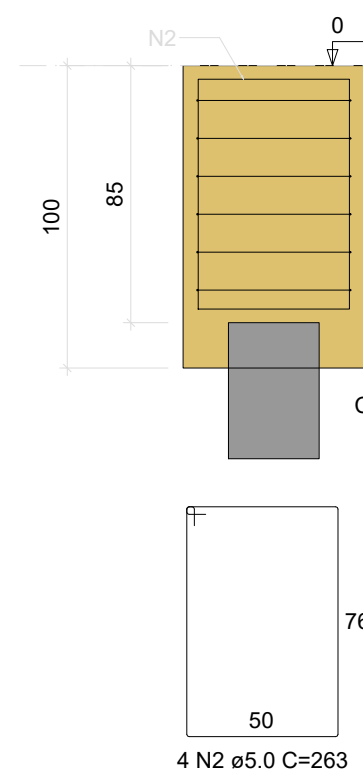
CORTE  
ESC 1:25



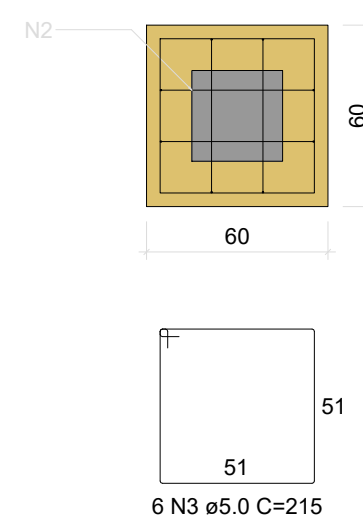
BI-P45  
1xR30  
PLANTA  
ESC 1:25



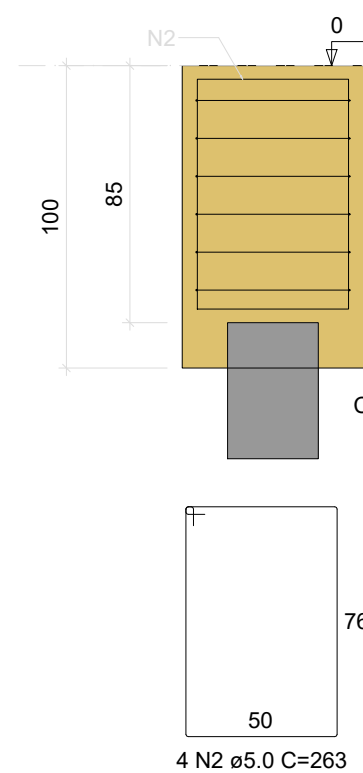
CORTE  
ESC 1:25



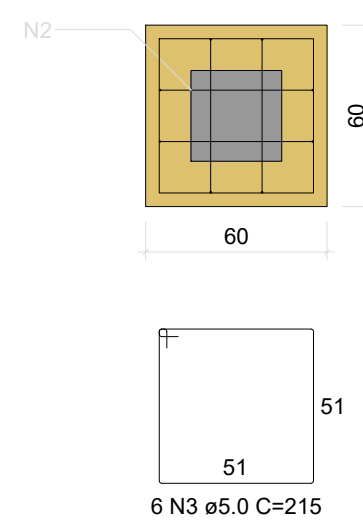
BI-P46  
1xR30  
PLANTA  
ESC 1:25



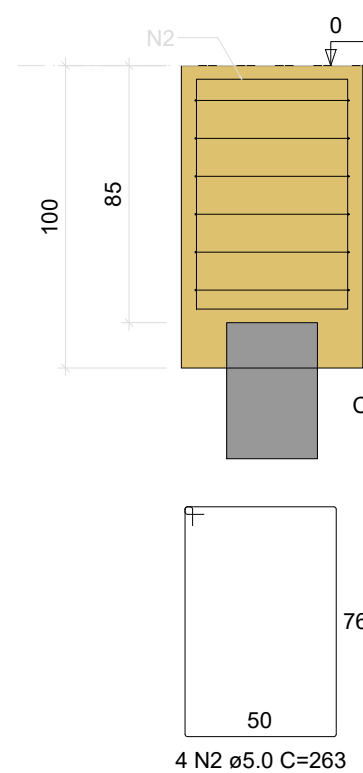
CORTE  
ESC 1:25



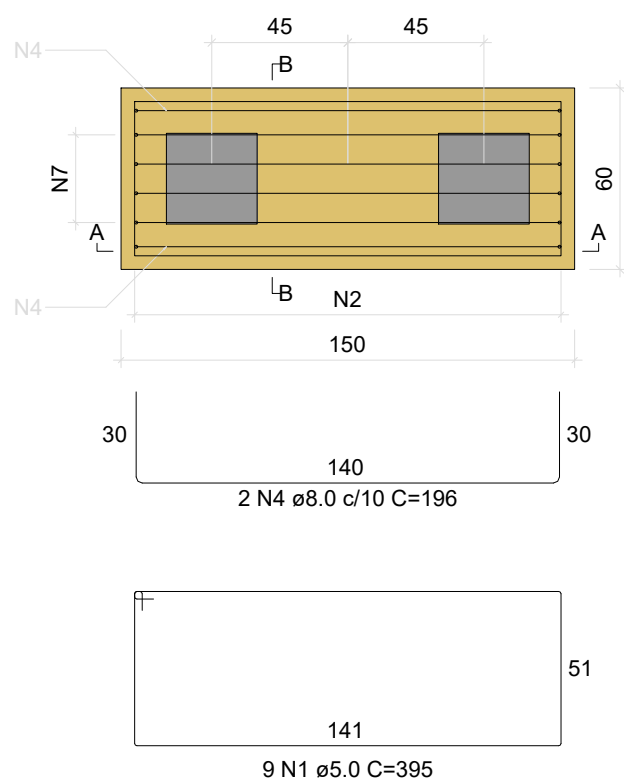
BI-P47  
1xR30  
PLANTA  
ESC 1:25



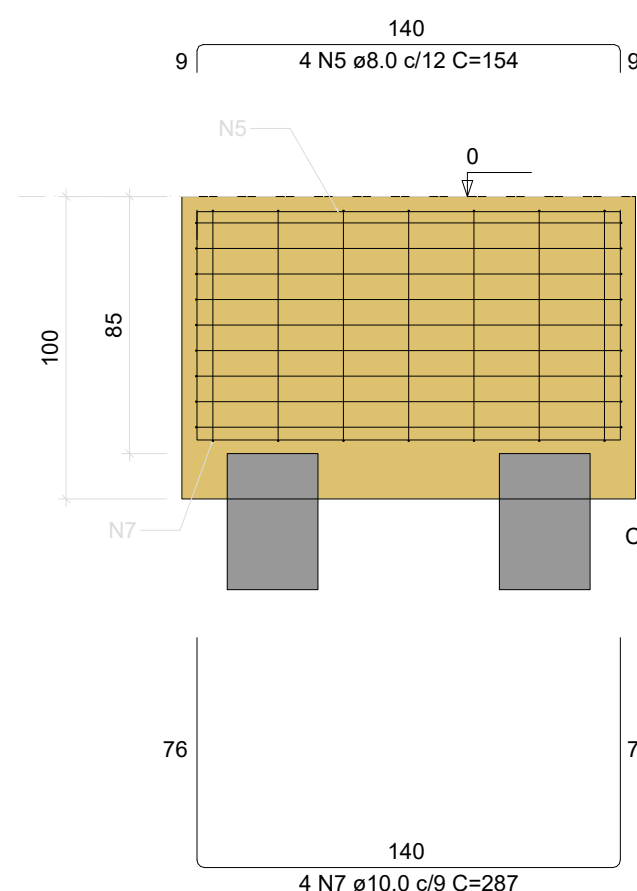
CORTE  
ESC 1:25



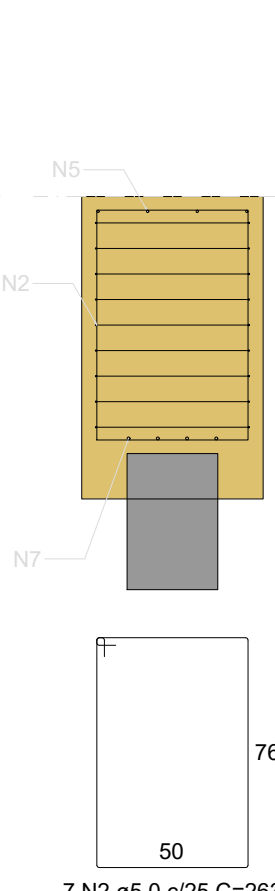
BI-P48  
2xR30  
PLANTA  
ESC 1:25



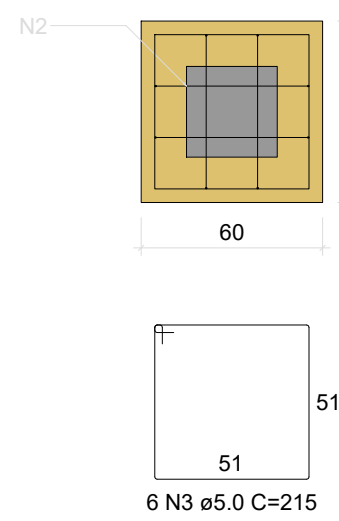
CORTE A-A  
ESC 1:25



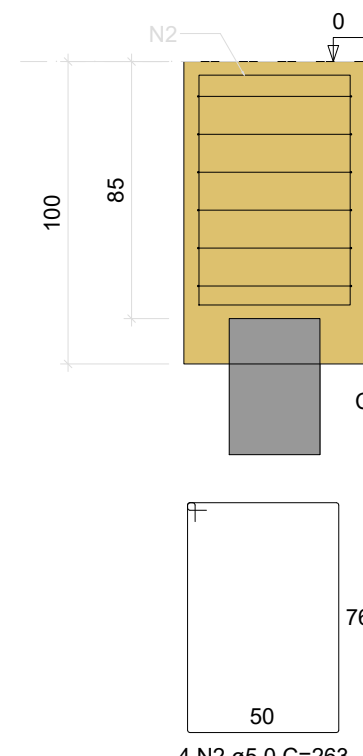
CORTE B-B  
ESC 1:25



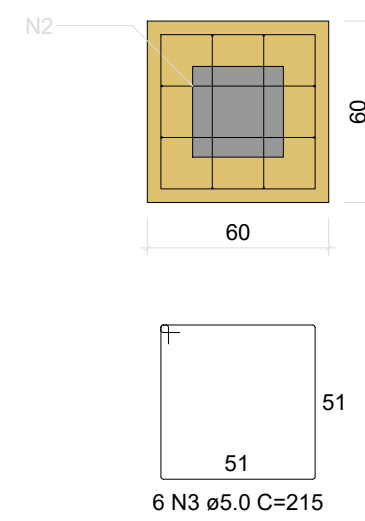
BI-P49  
1xR30  
PLANTA  
ESC 1:25



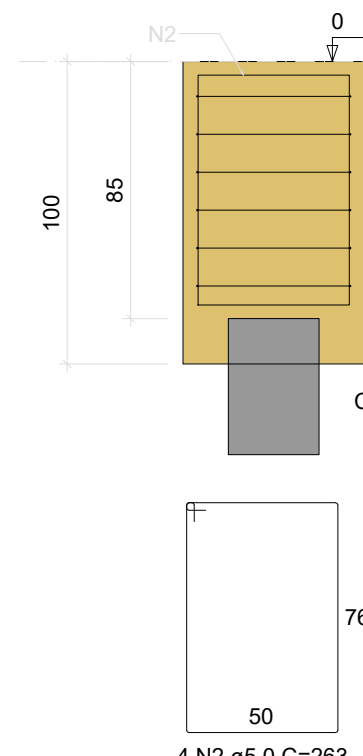
CORTE  
ESC 1:25



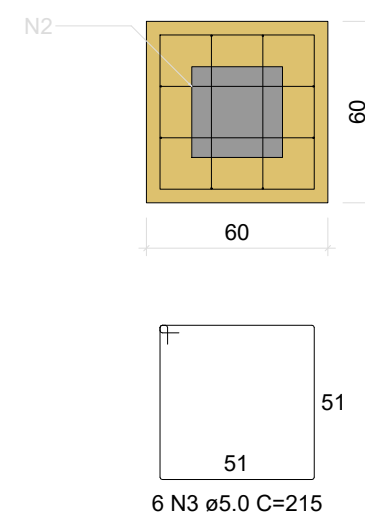
BI-P50  
1xR30  
PLANTA  
ESC 1:25



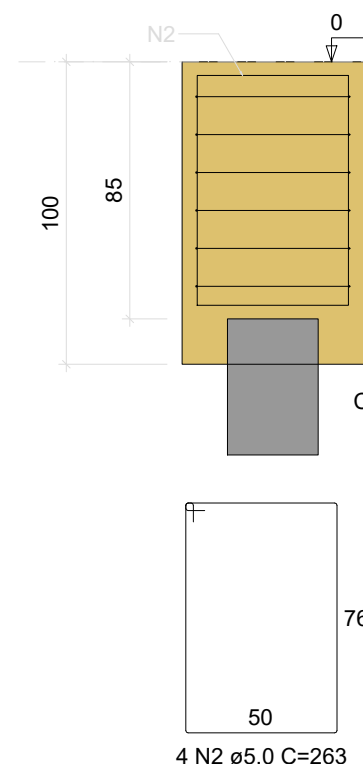
CORTE  
ESC 1:25



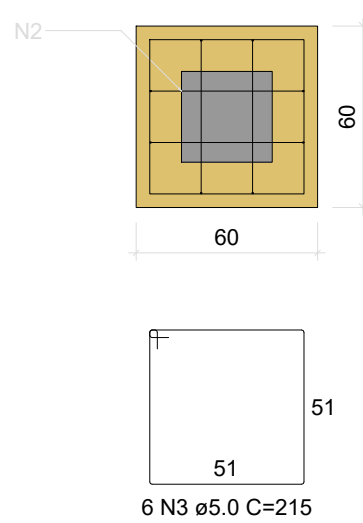
BI-P51  
1xR30  
PLANTA  
ESC 1:25



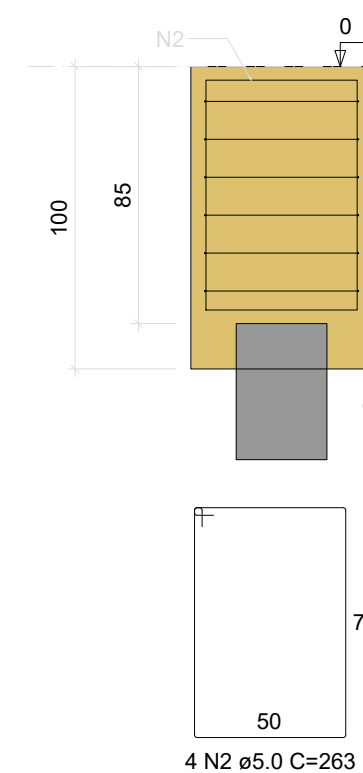
CORTE  
ESC 1:25



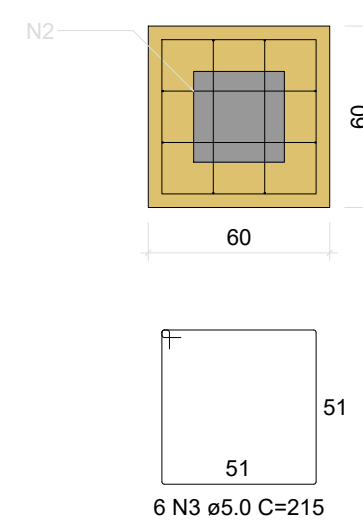
BI-P52  
1xR30  
PLANTA  
ESC 1:25



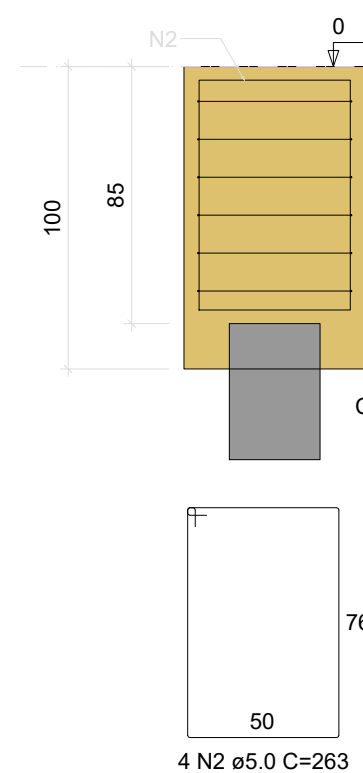
CORTE  
ESC 1:25



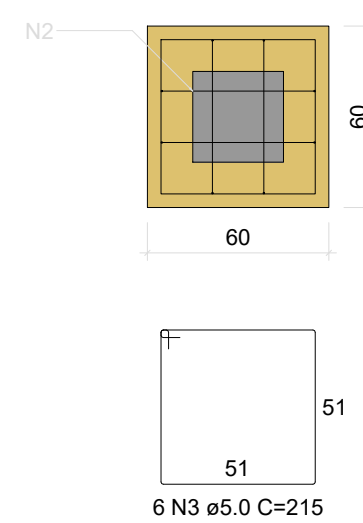
BI-P53  
1xR30  
PLANTA  
ESC 1:25



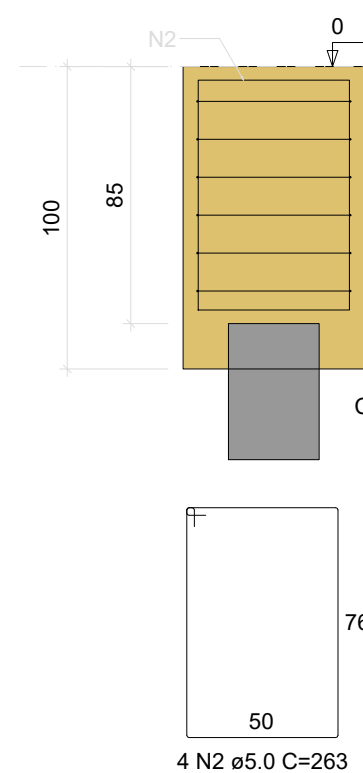
CORTE  
ESC 1:25



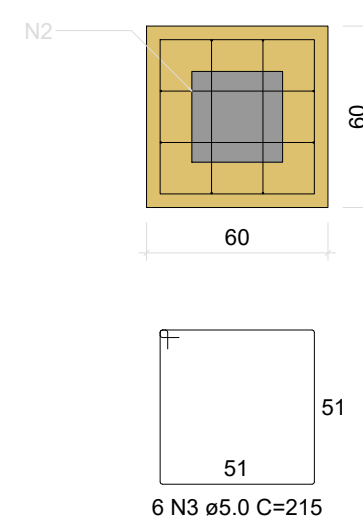
BI-P54  
1xR30  
PLANTA  
ESC 1:25



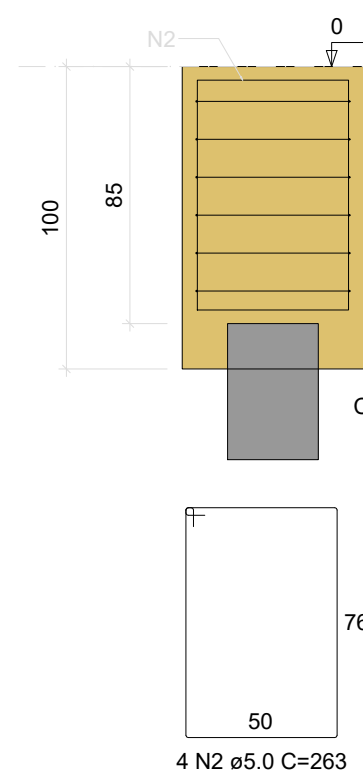
CORTE  
ESC 1:25



BI-P55  
1xR30  
PLANTA  
ESC 1:25



CORTE  
ESC 1:25



RELAÇÃO DO AÇO

BI-P39	BI-P40	BI-P41
BI-P42	BI-P43	BI-P44
BI-P45	BI-P46	BI-P47
BI-P48	BI-P49	BI-P50
BI-P51	BI-P52	BI-P53
BI-P54	BI-P55	

AÇO	N	DIAM (mm)	QUANT	C.UNIT (cm)	C.TOTAL (cm)
CA60	1	5.0	20	395	7900
	2	5.0	74	263	19462
	3	5.0	90	215	19350
CA50	4	8.0	4	196	784
	5	8.0	8	154	1232
	6	8.0	5	288	1440
	7	10.0	4	287	1148

RESUMO DO AÇO

AÇO	DIAM (mm)	C.TOTAL (m)	PESO + 10% (kg)
CA50	8.0	34.6	15
CA60	10.0	11.5	7.8
	5.0	467.1	79.2
PESO TOTAL (kg)			22.8
CA50			22.8
CA60			79.2

Volume de concreto (C-25) = 6.94 m³  
Área de forma = 44.40 m²



TODAS AS MEDIDAS E NÍVEIS DEVERÃO SER CONFERIDOS NO LOCAL.

R003			
R002			
R001			
REVISÃO	ALTERAÇÕES	EMISSÃO	RESPONSÁVEL

UNIDADE DE SAÚDE QUINTA DO PORTAL

<div><div><div>PREFEITURA MUNICIPAL DE PORTO ALEGRE</div><div>SECRETARIA MUNICIPAL DE OBRAS E INFRAESTRUTURA</div><div>DIRETORIA DE PROJETOS E OBRAS VIÁRIAS</div></div></div>			
<div>RESPONSÁVEIS TÉCNICOS</div> <div>PROJETO DE ARQUITETURA:</div> <div><b>JULIANO FABRO</b></div> <div>ARQUITETO E URBANISTA</div> <div>CAU.A22875/3   ID. FUNC.: 1609270</div>	<div>PROJETO DE ARQUITETURA:</div> <div><b>LUIZ PRESTES</b></div> <div>ARQUITETO E URBANISTA</div> <div>CAU.A23531-8   ID. FUNC.: 270122</div>	<div>PROJETO EXECUTIVO ESTRUTURAL:</div> <div><b>AMANDA DA CUNHA FIGUEIRA</b></div> <div>ENGENHEIRA CIVIL</div> <div>CREA.RS193.391   ID. FUNC.: 1606638</div>	<div>COORDENADOR</div> <div><b>CÉSAR FABRÍCIO BREDA</b></div> <div>DESENHO</div> <div>AMANDA</div>
<div>OBRA</div> <div><b>US QUINTA DO PORTAL</b></div>			<div>ÁREA</div> <div>672,53 m²</div>
<div>ENDEREÇO</div> <div><b>ESTRADA AFONSO LOURENÇO MARIANTE, Nº 5547 - LOMBA DO PINHEIRO</b></div>			<div>MUNICÍPIO</div> <div><b>PORTO ALEGRE/RS</b></div>
<div>PROJETO</div> <div><b>EXECUTIVO ESTRUTURAL</b></div>		<div>ASSUNTO</div> <div><b>SETOR SI</b> <b>BLOCOS DE FUNDAÇÃO - 03</b></div>	<div>Nº PRANCHA</div> <div><b>PE04</b></div>
<div>ESCALA</div> <div>INDICADA</div>	<div>DATA</div> <div>ABRIL/2024</div>		
<div>NOME ARQUIVO</div> <div>USQP-2024-EST-PEE.dwg</div>			